

The Maker's Scale Guide

Choosing the Right Print Scale for Sewing & Quilting

A calm, visual guide to help you choose fabric scale with confidence.



Created by Meg Dixon
Studio Meggi

Welcome, sewists

Have you ever finished a project and thought, “It’s nice... but something feels a little off” — even when your skills and fabric choice were solid?

Or have you tried to recreate a look you loved, only to find your version doesn’t carry the same mood?

Sometimes the difference isn’t your sewing at all. It’s scale — the size of the print and how it shows up once it’s cut, pieced, and worn.

In this guide, I’ll gently walk you through how to choose print scale with confidence, so your finished pieces feel as good as you imagined. You’re in the right place.

What scale really means

When we talk about scale in fabric, we're simply talking about size — the size of the print and how much space it takes up once it's sewn.

Scale isn't about whether a pattern is “busy” or “simple.”

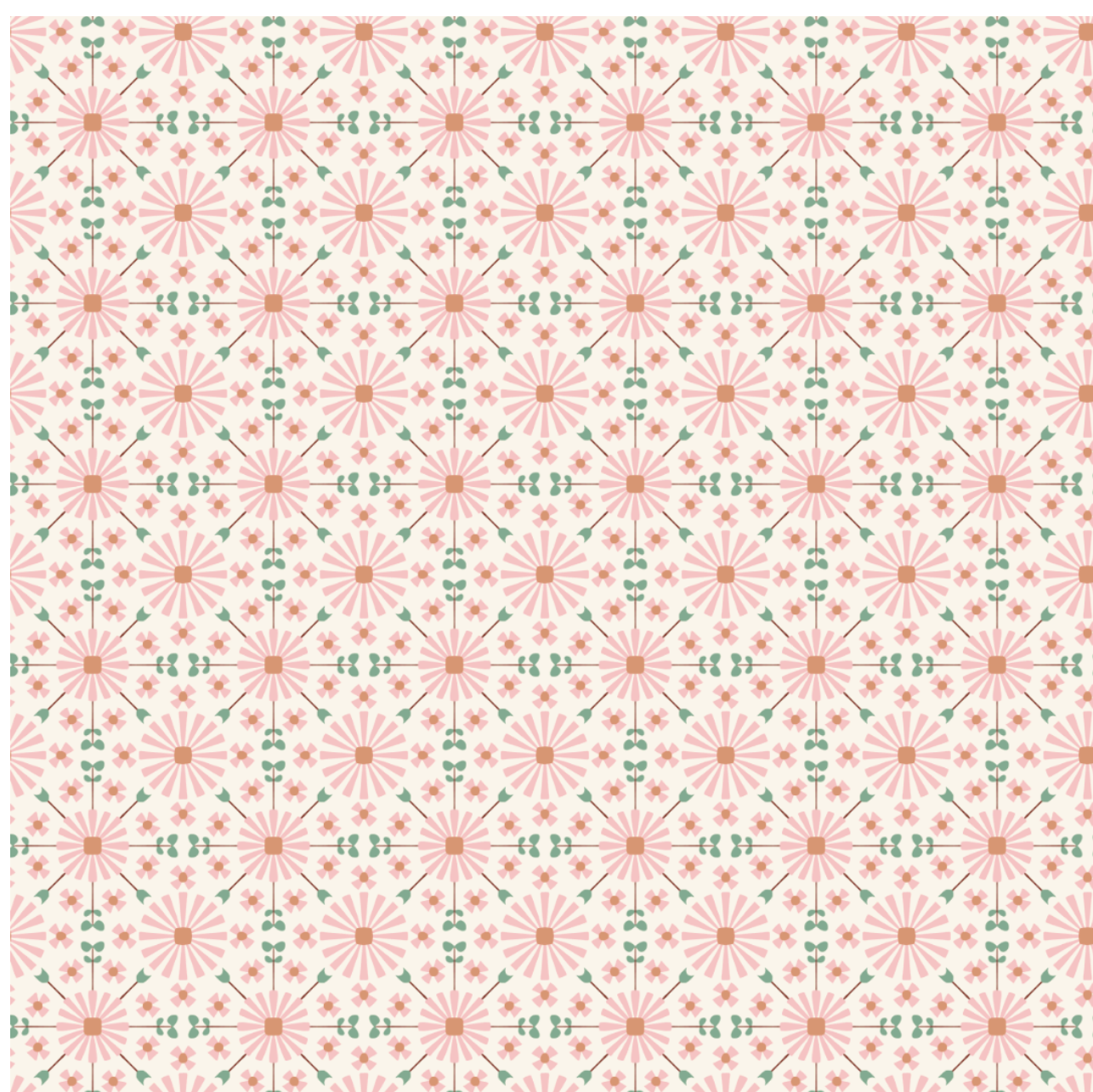
It's about how large the motifs are, how often they repeat, and how they interact with seams, pleats, and movement.

A print that feels perfect on the bolt can feel very different once it's cut into pieces or spread across a full garment.

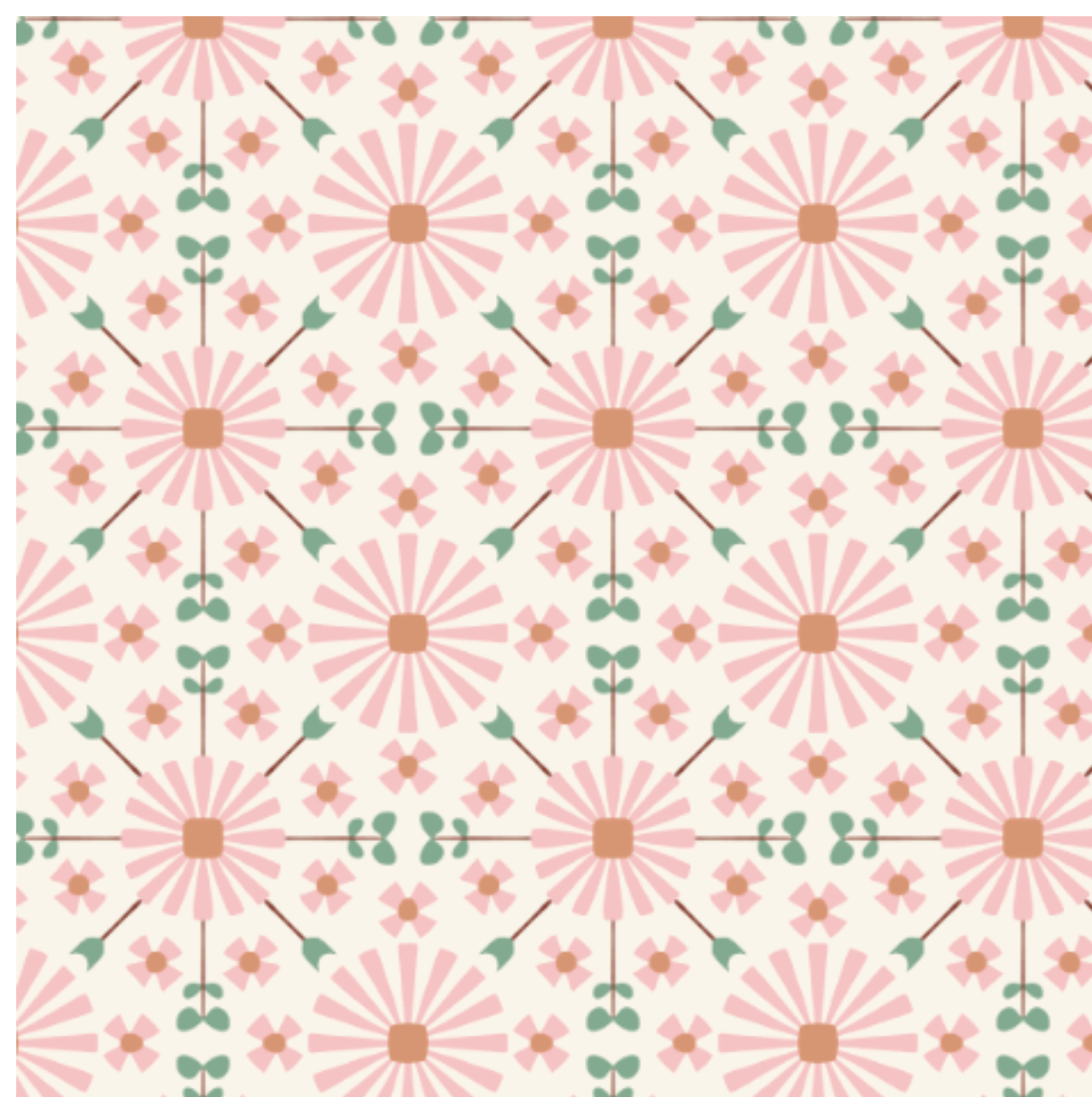
That's why scale can look different:

- larger than expected in finished projects
- smaller once seams and hems come into play
- different on a body than on a flat surface

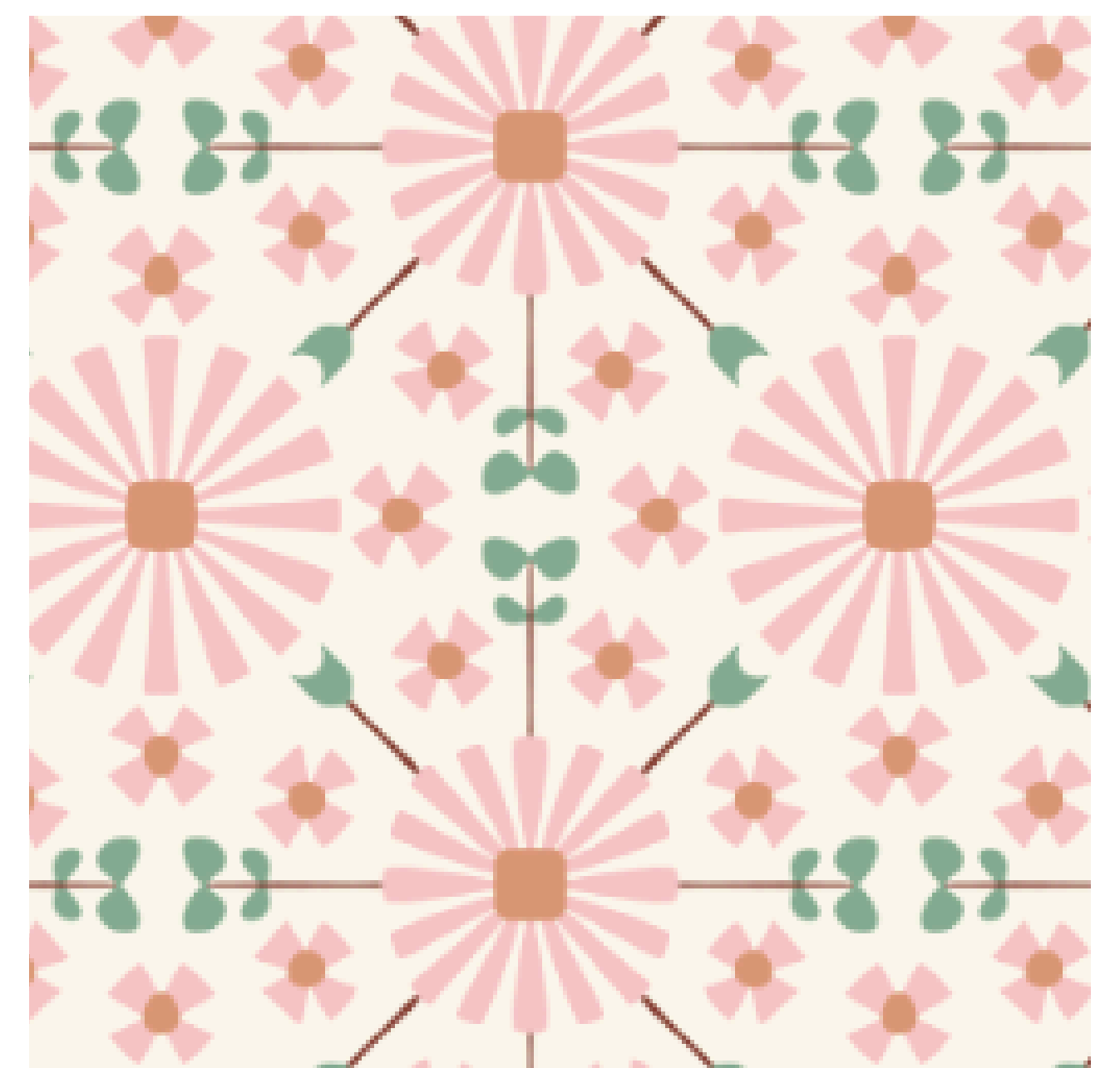
Understanding scale helps you predict how a fabric will behave — before you ever cut into it.



Small scale



Medium scale



Large scale

Choosing scale by project type

Not every project calls for the same print scale.

How much fabric you see at once — and how it's cut and constructed — plays a big role in how a pattern feels when finished.

Thinking about scale before you start can help your project feel more balanced and intentional.

1, Garments

For clothing, scale interacts closely with movement, seams, and body proportion.

- Small-scale prints feel subtle and wearable, especially for everyday pieces and children's clothing.
- Medium-scale prints are versatile and work well for dresses, skirts, and relaxed silhouettes.
- Large-scale prints make a statement, but often shine best on simpler garment shapes with fewer seams.

Tip: Consider how the print will be broken up by seams, darts, and pleats.

Pro Tip: Look in your closet and notice the print scale on your favorite garments.

2, Quilting

Quilts give you more uninterrupted fabric, which can dramatically change how scale reads.

- Small-scale prints work beautifully as blenders or background fabrics.
- Medium-scale prints add interest within pieced blocks without overpowering the design.
- Large-scale prints are ideal for borders, backing fabrics, or quilt centers where the pattern can breathe.

Tip: Step back and view your quilt from a distance — scale often reads differently across the whole piece.



3, Home décor & accessories

These projects often involve flat surfaces and repeated use, making scale especially important.

- Small-scale prints suit items like pouches, napkins, and tea towels.
- Medium-scale prints work well for pillows and table linens.
- Large-scale prints can feel bold and beautiful on curtains or statement pieces when used with intention.

Tip: Think about how often the item will be seen up close versus across a room.



Gentle reminder

There's no single "right" scale — only the scale that supports the feeling you want your finished piece to have. You are the designer. Trust your eye.



Scale & mood

Beyond function, scale plays a quiet but powerful role in how a project feels.

The same pattern can feel calm, playful, bold, or nostalgic — simply by changing its scale.

Understanding this connection helps you choose prints that support the mood you want to create.

Small scale

Small-scale prints often feel gentle and familiar.

They can:

- create a sense of calm and softness
- feel timeless and wearable
- blend easily with other patterns

Small-scale prints are ideal when you want the fabric to support the design, rather than lead it.

Medium scale

Medium-scale prints tend to feel balanced and versatile.

They can:

- hold visual interest without overwhelming
- work across many project types
- feel playful yet grounded

This scale often sits comfortably between subtle and statement.

Large scale

Large-scale prints make an emotional impression.

They can:

- feel bold, expressive, or joyful
- highlight the artwork itself
- bring energy to simple shapes or spaces

Large scale works best when it's given room to breathe and be seen.

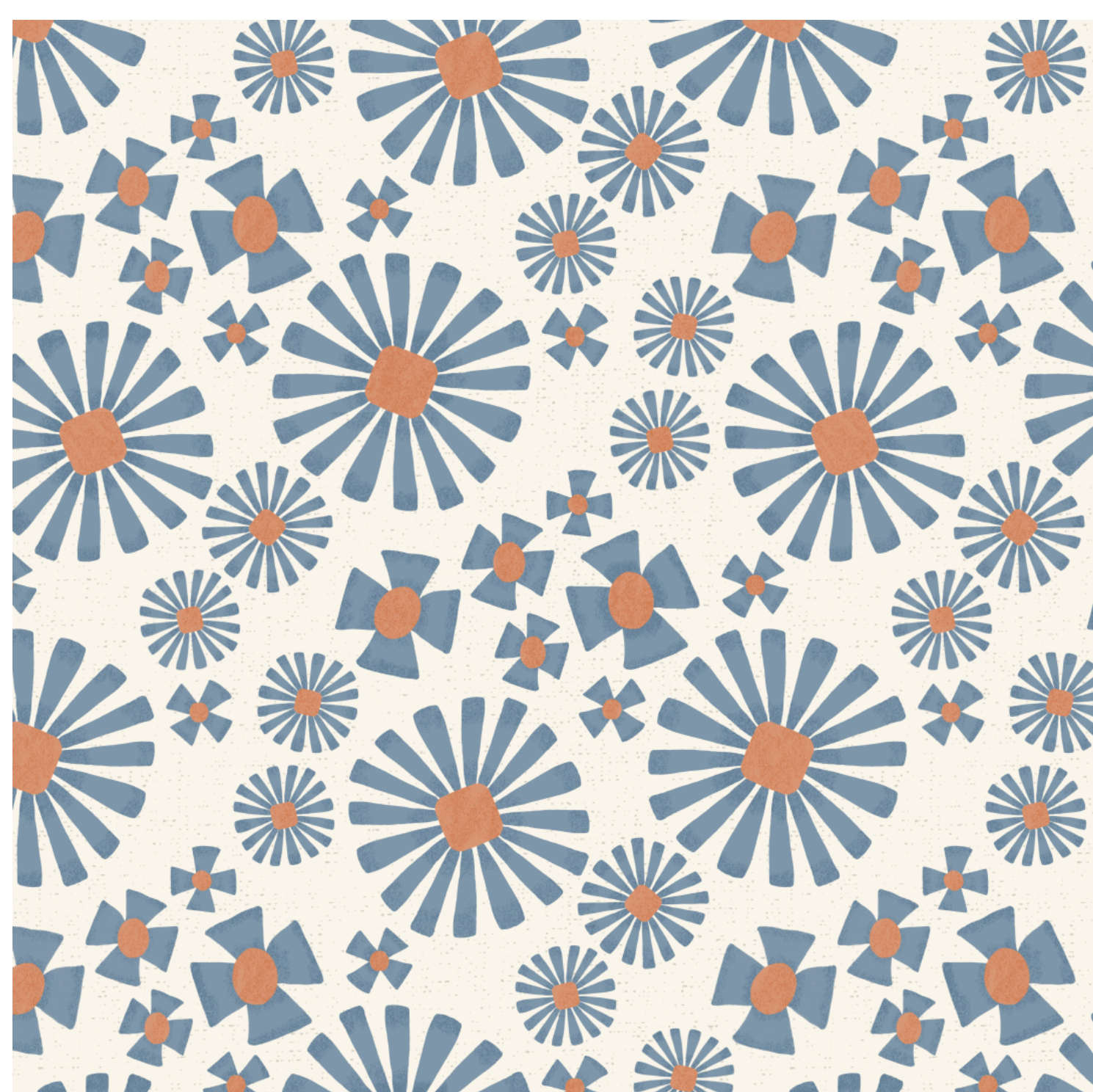
A gentle way to choose

Before deciding on scale, pause and ask:

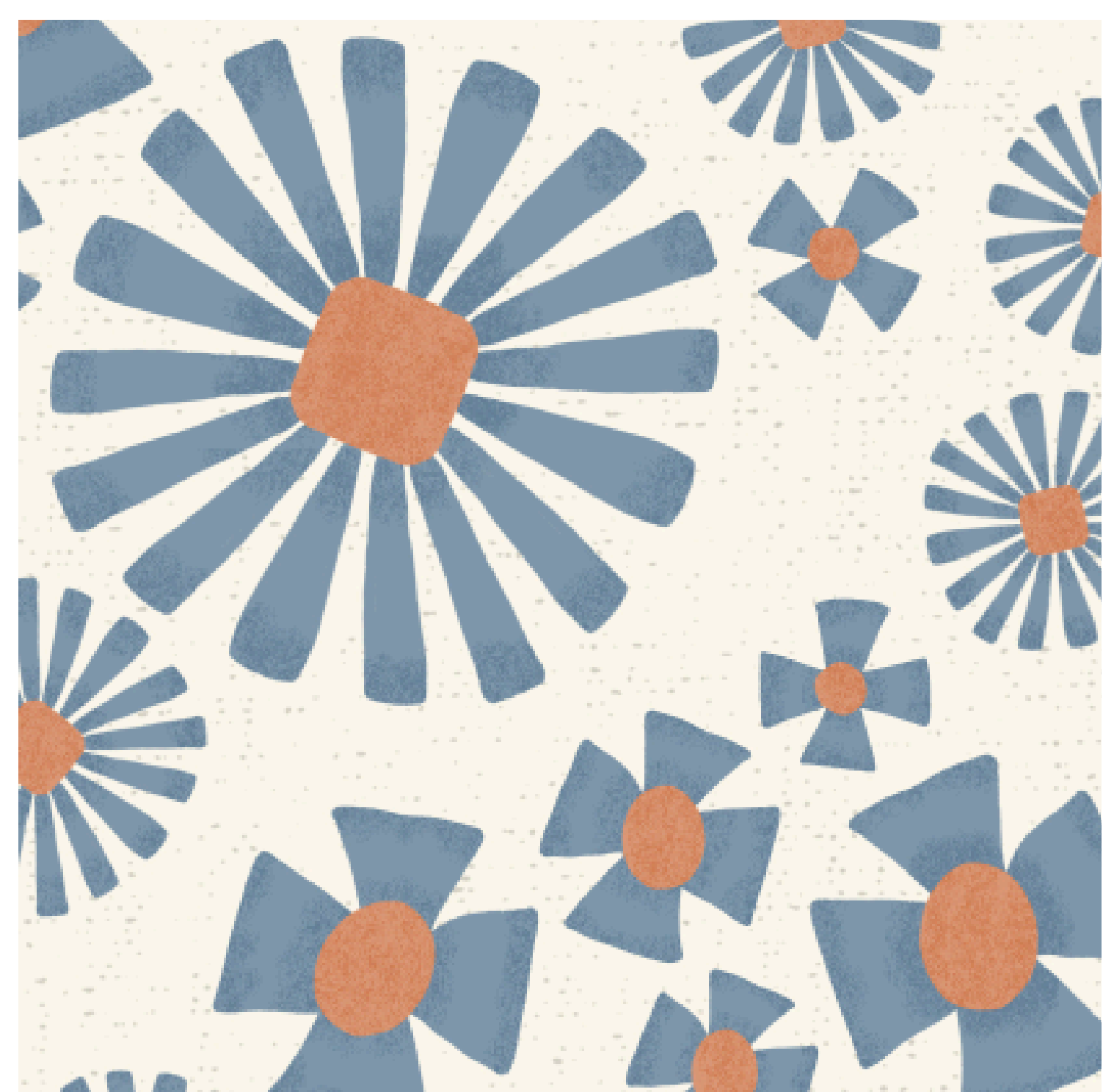
- Do I want this piece to feel quiet or expressive?
- Should the fabric blend in, or stand out?
- Will this be seen up close, or from across a room?

Let the feeling guide the choice.

Scale doesn't just change how a fabric looks — it changes how it's experienced.



Small scale



Large scale

Common scale mistakes (we all make)

Choosing print scale isn't always intuitive — and many of the “mistakes” sewists notice aren't really mistakes at all. They're simply part of learning how scale behaves once fabric is cut and used.

Here are a few common ones to watch for.

1, Judging scale only on screen

What looks perfect on a screen can feel very different in real life.

- Screens flatten texture and size
- Zooming in or out changes perception
- Repeats often feel larger once printed

Tip: If possible, print a small test swatch or view fabric photos that show scale in context.

2, Forgetting how seams change the pattern

Seams, hems, and darts all interrupt a print.

- Motifs may be cut in half
- Repeats can feel busier in small pieces
- Details sometimes disappear entirely

Tip: Imagine how the pattern will be broken up across the finished piece.

3, Choosing the same scale for every project

- A scale you love in one project may not work the same way in another.
- What works for a quilt may feel overwhelming on clothing
- What works for garments may feel too subtle in home décor

Tip: Let the project lead the scale choice, not habit.

4, Going too small “just to be safe”

Small scale can feel comfortable — but it isn't always the answer.

- Very small prints can read flat from a distance
- Details may get lost in construction
- The design may lose its intended character

Tip: If the piece feels underwhelming, scale might be the reason.

Gentle reminder

If a project doesn't turn out the way you imagined, it's not a failure.

It's information — and it helps guide the next choice.

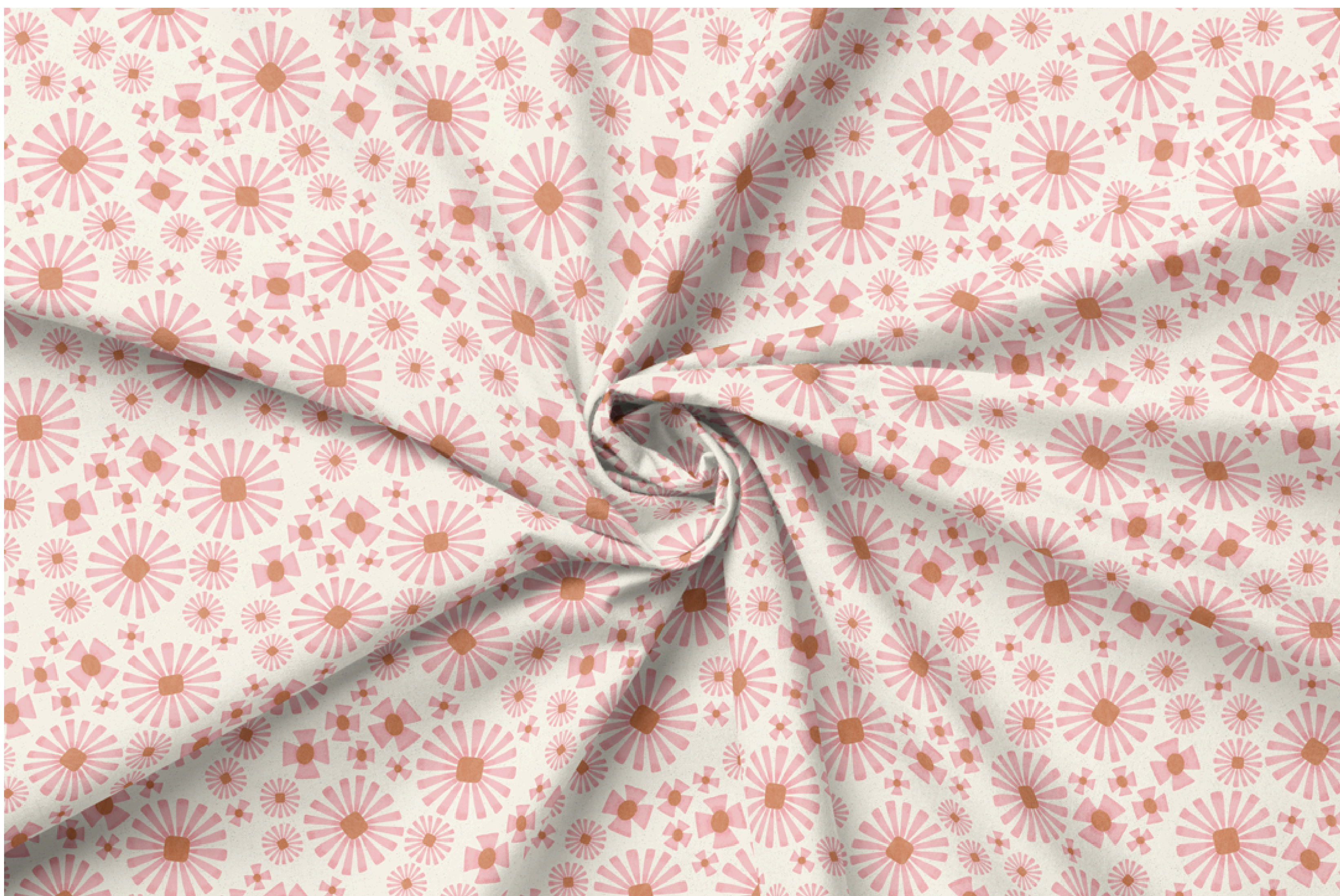
You are learning — even when it doesn't feel that way.

Take a moment to appreciate what you made.

Real examples from Studio Meggi

Seeing scale in context often makes it easier to understand than words alone.

The examples on this page use the same design language, shown at different scales and in different applications — so you can notice how scale changes the feeling, even when the artwork stays the same.



Same design shown in fabric form

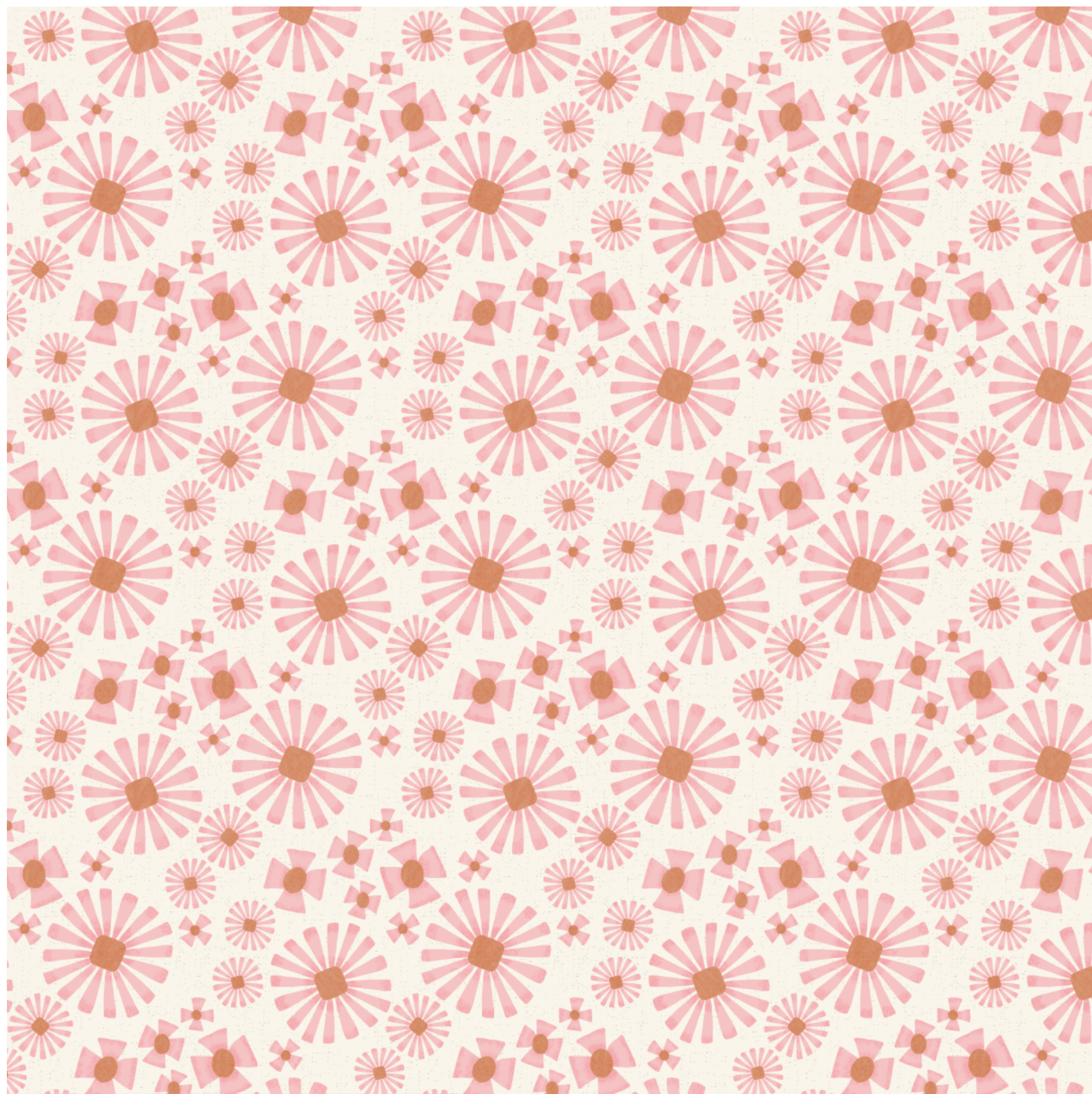
Small scale

At a smaller scale, the pattern recedes, creating a gentle and detailed surface.

This scale:

- blends easily into garments and accessories
- supports the overall design without drawing too much attention
- works well when the fabric will be cut into smaller pieces

Small scale often creates a calm, familiar rhythm.



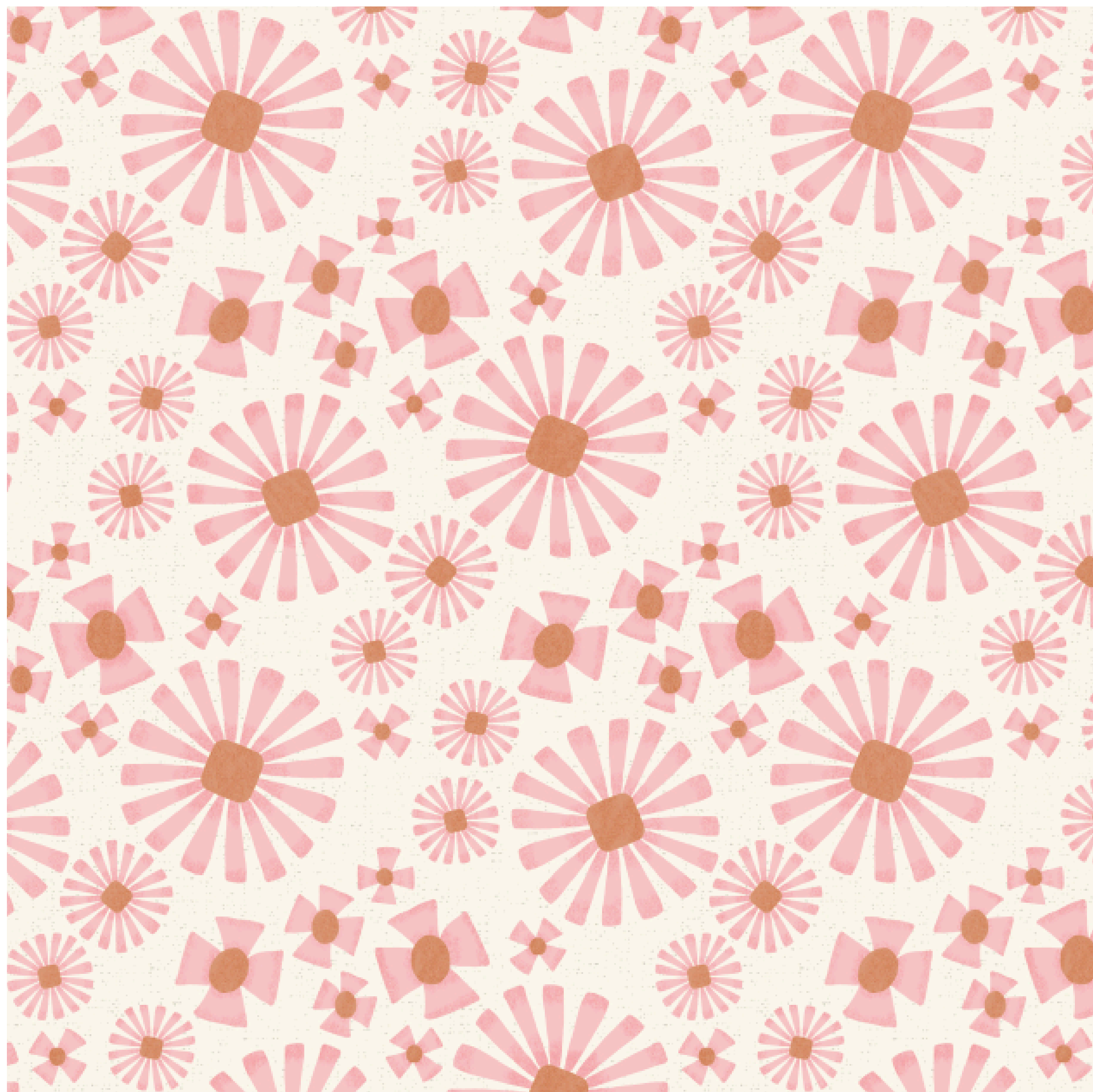
Medium scale

At a medium scale, the pattern becomes clearly readable while staying balanced.

This scale:

- allows motifs to be clearly seen
- holds interest without overwhelming
- adapts well across garments, quilting, and home projects

Medium scale often feels like the most flexible option.



Large scale

At a larger scale, the artwork steps forward and becomes the focal point.

This scale:

- highlights individual motifs
- creates a stronger emotional presence
- works best when given space to breathe

Large scale is ideal when you want the fabric to make a statement.



A quiet observation

The design doesn't change — only the scale does.
And with that shift, the experience changes too.

Designs shown from the Mediterranean Bloom collection by Studio Meggi.



Closing thoughts

Choosing print scale isn't about getting it "right." It's about noticing how fabric behaves — and how it makes you feel once it's part of something real.

With calm observation and a little practice, scale becomes less intimidating and more intuitive. You begin to trust your eye, your instincts, and your experience as a maker.

Let this guide be something you return to — not as a rulebook, but as a reference and a reminder.

A few gentle next steps

If you'd like to keep exploring scale and design:

- Try viewing your favorite makes from a distance and up close
- Notice which print scales you're naturally drawn to
- Experiment with the same pattern at a different scale on your next project

Small shifts can lead to surprisingly different results.

Stay connected

If you enjoyed this guide, you're always welcome to explore more of my work or follow along for future collections and quiet design insights.

 [Studiomeggi.com](https://www.studiomeggi.com)

 [@StudioMeggi](https://www.instagram.com/StudioMeggi)

 meggi@studiomeggi.com

Thoughts or reflections are always welcome.